



本昭鍋爐 BEEN JAU BOILER

高品質的產品合理的價格是我們的目標
High quality product and reasonable price are our objective.

全自動熱媒鍋爐 AUTOMATIC THERMAL OIL BOILER



本昭興業股份有限公司
BEEN JAU ENTERPRISE CO., LTD.

熱媒鍋爐簡介 THERMAL OIL BOILER INTRODUCTION

熱媒鍋爐是一種高溫低壓的加熱系統，以柴油、瓦斯、沼氣、重油為燃料或以電熱方式加熱液態的熱媒油，經由循環幫浦輸送至各種型態的加熱裝置，供給熱量後再回到鍋爐加溫；是目前最安全、經濟、耐用的加熱系統。廣泛用於需要高溫加熱的製程，可免除使用高壓蒸氣加溫的危險及不便。

Thermal oil boiler is a high temperature with low pressure heating system, using light oil, gas, biogas, heavy oil or electricity to heating up thermal oil using circulation pump deliver oil to various types of heating facilities, thermal oil will return back to boiler for reheating after heat is supplied. It is by now the safest, most economical and reliable in high temperature heating system, it can avoid the danger of using high pressure steam and other inconvenience.

設計特點 DESIGN FEATURES

- ▲ 燃燒室寬敞熱吸收熱效率高，有立型及臥型兩種設計

Large combustion chamber for high efficient heat absorption, available in horizontal and vertical design.

- ▲ 精確計算熱媒油的流速、流量，無熱媒油過熱裂解之虞

Precisely calculated thermal oil velocity and flow, prevent thermal oil pyrolysis from over heating.

- ▲ 爐內盤管多管併進受熱均勻，無多餘的無效傳熱面積

Multi steel tube helical coils continuous bending to make furnace evenly heated, no excessive transfer surface is wasted.

- ▲ 一級無縫鋼管直管對接，焊接效率100%，並經退火熱處理

Seamless steel tube is continuous butt-end together, welding efficiency 100%, annealed treated.

- ▲ 優良的熱效率設計，充分吸收燃燒輻射熱、對流熱，排氣溫度低

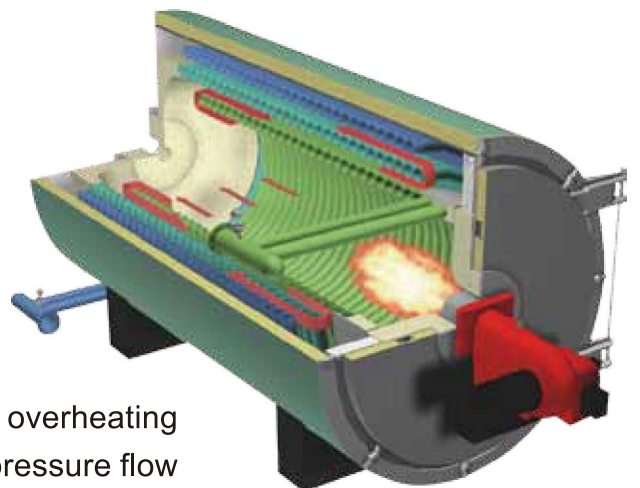
Excellent thermal efficiency design, absorbs combustion radiation, convection heat, low flue gas temperature.

- ▲ 爐體以高密度岩棉及矽酸鈣厚度保溫，散熱損失小

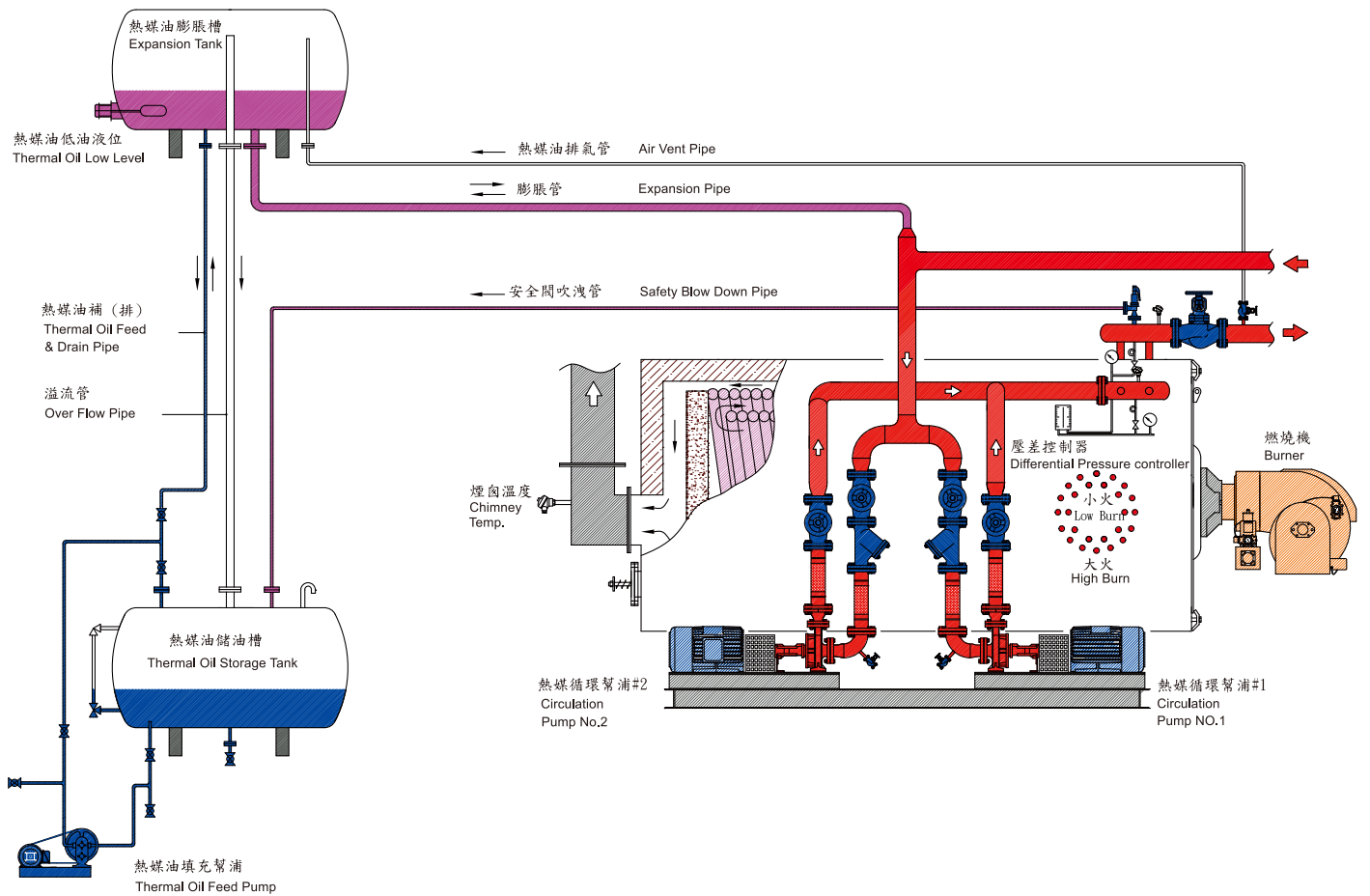
Furnace shell is insulated with thick high density rock wool and calcium silicate, for little heat loss.

- ▲ 安全連鎖設計、出油溫控、回油超溫、排氣溫度、流量差壓異常、熱媒油不足……等等，自動停機多重安全保護裝置。

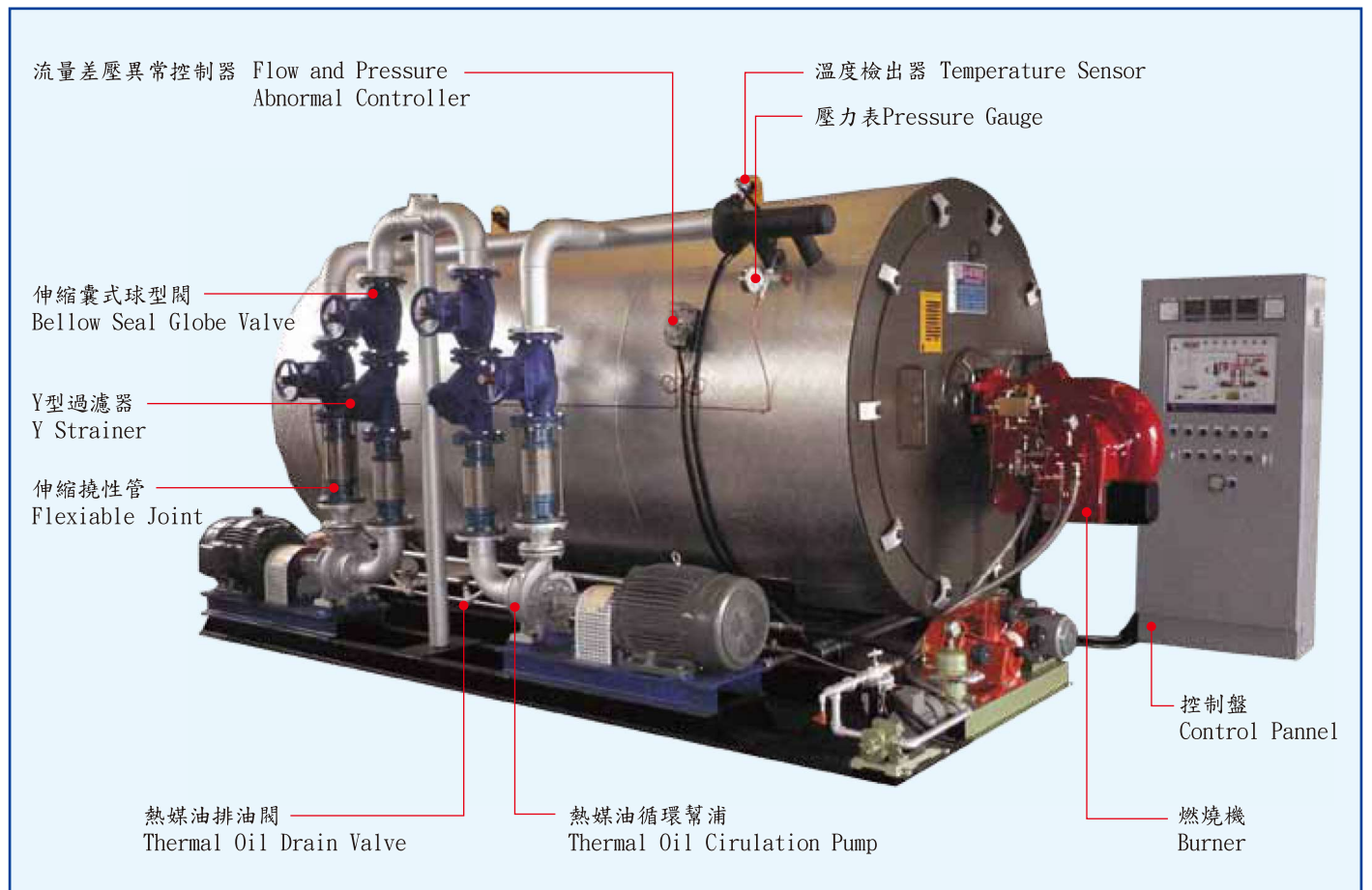
Safety designs for oil outlet control, oil return overheating control, Flue gas temperature Control, Differential pressure flow control, Thermal oil level control... etc. Abnormal auto shutdown safety interlocks devices.



熱媒系統流程圖 Thermal Oil System Flow Chart



熱媒鍋爐主要配備及名稱 Thermal Oil Boiler Main Components



BJT熱媒鍋爐規格與尺寸 BJT SERIES SPECIFICATION AND DIMENSION

型式 MODE	BJT-	10	20	30	40	50	60	80	100	125	150	175	200	250	300	350
出力熱量 Mean Capacity	Kcal/Hr×10 ⁴	10	20	30	40	50	60	80	100	125	150	175	200	250	300	350
	KW	116	232	349	465	582	698	931	1164	1455	1746	2037	2328	2910	3492	4074
設計壓力 Design Pressure	kg/cm ²	7														
最高使用溫度 Max. working Temp	°C	300(300°C above on request)														
全載時燃料消耗量	Fully Load Consumption															
柴油 Diesel Oil	L/Hr	14	28	42	56	70	84	112	140	175	210	245	280	350	420	490
重油 Heavy Oil	L/Hr			37	49	61	73	98	122	153	183	214	244	306	367	428
天然瓦斯 LNG	NM ³ /Hr	12.8	25.5	38.5	51	64	77	102	127	160	192	224	256	320	383	447
桶裝瓦斯 LPG	kg/Hr	9.5	19	28.5	38	47.5	57	76	95	119	142	166	190	238	284	332
熱媒油出油閥 Outlet valve	吋	2"	2"	2"	2½"	2½"	3"	4"	4"	5"	5"	5"	6"	6"	8"	8"
循環泵浦馬力 Circulation pump	HP	3	5	7.5	10	10	15	20	25	30	30	40	50	60	60	75
總電量 Power Source(KW)	燃重油 Use Heavy Oil			15	18	18	22	30	40	45	48	55	60	80	98	110
	燃柴油・瓦斯 Use Diesel Oil or Gas	5	5	7.5	10	10	13	18	22	28	38	40	50	70	78	90
鍋爐主要尺寸 Boiler Main Size (mm)	爐身外徑 Outside Diameter	1000	1180	1260	1330	1600	1700	1700	1800	1860	1860	2000	2000	2200	2350	2600
	爐身長(高)度 Length(Height)	1400	1525	1900	2200	2380	2600	2800	3000	3500	4000	4200	4500	4800	5200	5500
	煙囪直徑 Diameter of Chimney	150	200	200	250	250	300	300	300	325	390	485	500	500	550	600
鍋爐概略重量 (TON)	Approximate Weight	1.6	2.2	2.6	3.0	3.6	4.0	4.5	5.0	5.8	6.5	7.2	7.5	9.0	11.0	13.0
爐內傳熱油內容量 (Liter)	Thermal Oil Volume Inside Boiler	190	250	300	400	500	600	650	860	1000	1300	1550	2000	3200	4200	4350

本表所列規格尺寸因裝備改良等原因，不另行通知。

We reserve the right to made necessary modification and adjustment in specification and dimensions, etc. without further notification in case of improvement in equipment or other causes.

更大發熱量及特定發熱量可另行設計製造。

Larger output and special capacity available on request.

燃料低發熱量

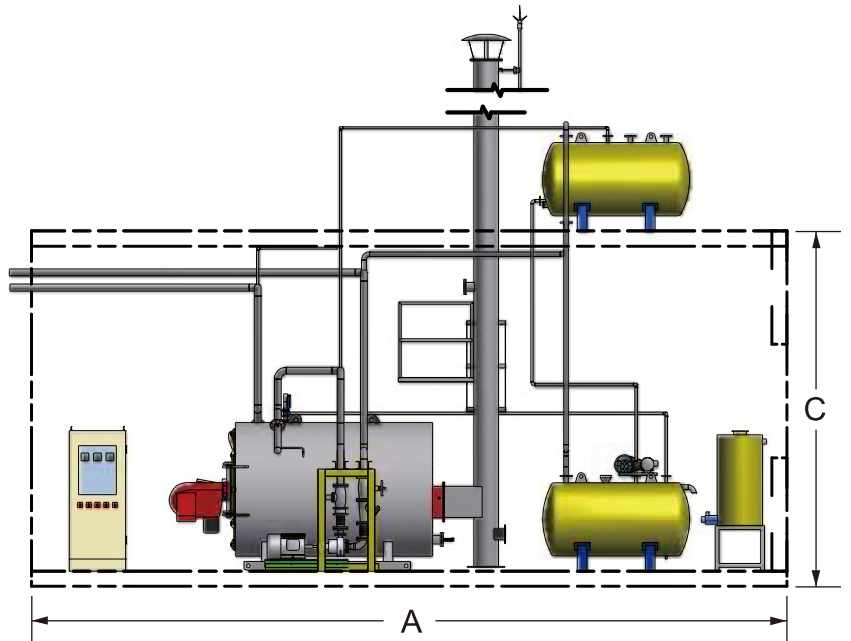
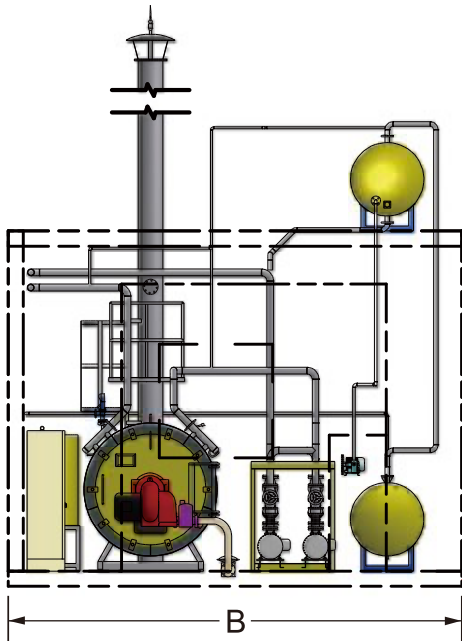
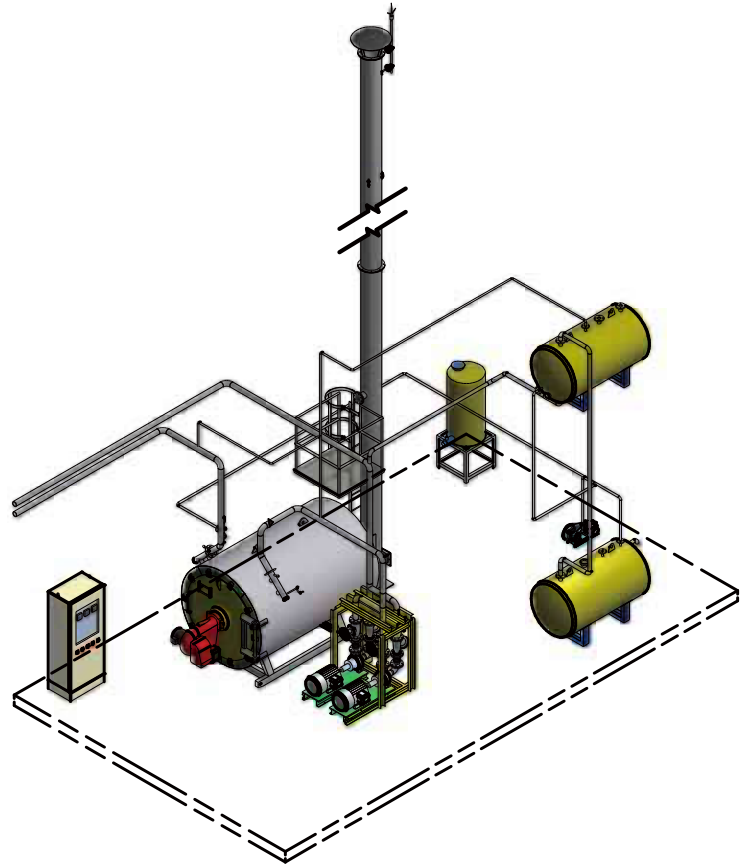
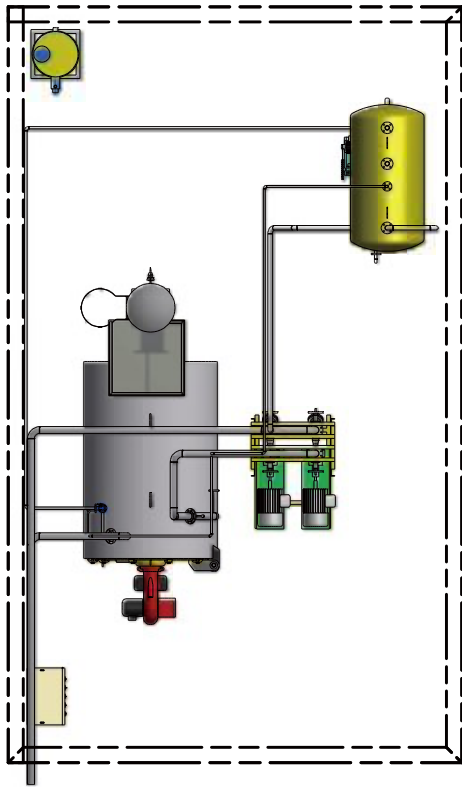
LOW HEAT VALUE OF FUEL

柴油DIESEL OIL.....10300kcal/kg(比重Sp.Gravity-0.79) 8140 Kcal/l

重油HEAVY OIL.....9700kcal/kg(比重Sp.Gravity-0.96) 9300 Kcal/l

瓦斯GAS.....天然瓦斯LNG(LIQUIFIED NATURAL GAS)8900Kcal/NM³

桶裝瓦斯LPG(LIQUIFIED PETROLEUM GAS)12000Kcal/kg



鍋爐房建議尺寸(mm) Recommended boiler room size(mm)

型式 MODE	BJT						
	10~30	40~50	60~80	100~125	150~175	200~250	300~350
A	5000	6500	7500	8000	9000	10000	11500
B	3500	5500	6500	7000	7500	8000	8500
C	3500	4000	4500	5000	6000	6000	6000

熱媒模溫機、溫控單元組 Mould heating unit & Temperature control unit



系列產品及工程 Products series & Engineering



臥型煙管式鍋爐
HORIZONTAL FIRE TUBE STEAM BOILER



貫流式蒸氣鍋爐
ONCE THROUGH STEAM BOILER



熱媒加熱爐
THERMAL OIL HEATER



熱水鍋爐
HOT WATER BOILER



主要產品

- 1.貫流式蒸氣鍋爐
- 2.熱媒加熱爐
- 3.臥型煙管式鍋爐
- 4.熱水鍋爐
- 5.熱交換器、壓力容器
- 6.各種化學不銹鋼油槽、桶槽
- 7.各高壓管道配管工程
- 8.過濾及軟水處理設備
- 9.鍋爐化學藥劑酸洗維護
- 10.鍋爐清罐劑、脫氧劑

MAIN PRODUCTS

- 1.Once Through Steam Boiler.
- 2.Thermal Oil Heater.
- 3.Horizontal Fire Tube Boiler.
- 4.Hot Water Boiler.
- 5.Heat Exchanger,Pressure Vessel.
- 6.Various Chemical Stainless Steel Oil Tank, Drum Tank.
- 7.Various High Pressure Piping Engineering.
- 8.Filtration & Soft Water Disposing Equipment.
- 9.Boiler Chemical Picking Maintenance.
- 10.Can Detergent, Deoxidant for Boiler.

本昭興業股份有限公司 BEEN JAU ENTERPRISE CO., LTD.

新北市林口區工九路31號

No. 31 GUNGJIOU RD., LIN KOU DIST., NEW TAIPEI CITY, TAIWAN.

TEL:886-2-86011926 FAX:886-2-86011931

E-mail: beenjau@ms38.hinet.net

網址: <http://www.beenjau.com.tw>

代理商：
Agent：