



# 本昭鍋爐

# BEEN JAU BOILER

## AUTOMATIC ONCE THROUGH STEAM BOILER

## 全自動貫流式蒸氣鍋爐



# Once Through Steam Boiler

## 貫流式蒸氣鍋爐簡介

“貫流式蒸氣鍋爐”通常以瓦斯、柴油、重油、沼氣為燃料，經由蒸氣管路輸送高壓飽和蒸汽供應各種不同類型的加熱系統。本昭貫流式系列另可搭配並聯裝置可藉由台數自動控制，依負載自動調整啟動台數降低燃料成本。

“Once Through Steam Boiler” transfer heat from heat source such as Gas, Diesel, Heavy oil, Biogas , exchanging water into steam and effectively deliver high pressure saturated steam to all different kind of applications. With minimal footprints and flexible configurations, BJB series can also installed in modular systems consisting two or more compact modules in series with steam back-up flexibility for fluctuation of large steam load demand.

### 設計特點



- ▶ **特殊導熱片設計**  
增加傳導熱效率，  
使傳熱面傳熱性能高



- ▶ **爐體嚴格品質，堅固耐用**  
鍋爐水管上下耐高溫焊道保護，  
防止熱脹冷縮的龜裂，  
更能延長爐體本身壽命



- ▶ **材質保證**  
鍋爐本體水管採用STB-340  
鍋爐專用無縫碳素鋼管，集  
汽室，集水管，管板均採用  
SB-450特級鋼板



- ▶ **優良熱效率設計，充分吸收輻射熱**  
爐體的內部波浪熱氣流構造，  
使得在水管外燃燒之氣體，  
更能增加接觸傳熱面的傳熱量



- ▶ **蒸氣乾燥度**  
雙重氣水分離方式，  
蒸氣乾燥度99%以上



- ▶ **體積小**  
不佔空間



- ▶ **起磅快**  
起磅快，5分鐘即可達到  
使用壓力



- ▶ **節省能源**  
效率高達90%~96%

### Features

- ▶ Higher heat conductivity, efficiency.
- ▶ Excellent heat efficiency design ,fully absorb radiant heat.
- ▶ High quality steam offer 99% of dryness.
- ▶ Material assurance - boiler tubes STB-340 - water drum & tube plate SB450.
- ▶ Small Footprint.
- ▶ Boiler burning efficiency up to 90%~96 %
- ▶ Rapid response full output from cold start within 5 minutes .

# Modular Controls (Optional) 鍋爐多台並聯控制

小型並聯代替大型鍋爐 Small footprint over larger unit



並聯系統 Modular system



- ▶ 高效率自動管理與功能靈活性，依負載自動調整台數。  
Highly efficient load management with back-up capability and flexibility for changing steam demands.
- ▶ 可依現場蒸氣需求選擇單動或連動啟動台數，取代傳統大型鍋爐不方便性。  
boiler starting station adjustable to manual or automatic, in replacement of traditional Inconvenient large scale boiler.
- ▶ 充分活用空間，靈活性佳。  
Fully utilize room space, increase flexibility.

## HMI control panel 全彩色觸控面板(選配)

操作容易及具有完善功能的人機控制操作板介面。  
Sophisticated control user-friendly HMI control panel.

控制顯示系統操作可變更手動、全自動模式。  
PLC control capable in both manually mode and Auto mode.

可搭配雙燃料機種設計，指示燈中英文顯示。  
Dual fuel HMI capable.

LED顯示爐內、煙囪溫度(選配)。  
LED display chimney temperature, boiler temperature, (optional).

監控通訊埠接點，可提供遠端監控(選配)。  
Modbus connection ready.





# BJB-200~400



(瓦斯)  
(Gas)



(柴油)  
(Diesel)

## 燃料低發熱量 Heat value of fuel

柴油 DIESEL (10,300Kcal/kg x Sp. Gravity 0.79)

重油 HEAVY OIL (9,700Kcal/kg x Sp. Gravity 0.96)

天然氣LNG ( Liquefied Natural Gas)

桶裝瓦斯LPG ( Liquefied Petroleum Gas)

8,140 Kcal/litre

9,300 Kcal/litre

8,900 Kcal/Nm<sup>3</sup>

12,000 Kcal/kg

## SPECIFICATION 規格表 BJB-200~400

型 式 MODEL								
			BJB-200	BJB-250	BJB-300	BJB-350	BJB-400	
相當蒸發量	EQUIV. EVAPORATION	Kg/hr	200	250	300	350	400	
發熱量	CALORIFIC VALUE	Kcal/hr	107,800	134,750	161,700	188,650	215,600	
最高壓力	MAX.PRESSURE	Kg/cm <sup>2</sup>	10					
傳熱面積	HEATING SURFACE	m <sup>2</sup>	5.2	5.2	6.6	6.6	7	
熱效率	EFFICIENCY	%	90~96%					
保有水量	QTY.OF WATER	L	62	62	96	96	108	
全載時燃料 消耗量 FULLY LOAD CONSUMPTION	柴油	DIESEL	L/hr.	14.4	18	21.6	25.2	28.8
	LNG瓦斯	LNG	Nm <sup>3</sup> /hr.	13.2	16.5	19.8	23.1	26.4
	LPG瓦斯	LPG	Kg/hr.	9.8	12.3	14.7	17.2	19.6
燃燒方式	COMBUSTION TYPE		ON/OFF					
儀控方式	BOILER CONTROL		選鈕控制或人機控制 FUNCTION SWITCH or HMI					
總電量	ELETRICAL POWER	KW	1	1	1.15	1.15	1.15	
製品重量	WEIGHT	Kg	480	480	650	650	700	
蒸氣出口	STEAM OUTLET	mm	25	25	25	25	25	
煙囪口徑	CHIMNEY DIAMETER		150	150	200	200	200	
搬入口尺寸	ROOM ENTRANCE		W1000×H1900		W1100×H2000			

# BJB-500~750



(瓦斯)  
(Gas)



(柴油)  
(Diesel)



(重油)  
(Heavy Oil)

## SPECIFICATION 規格表 BJB-500~750

型 式 MODEL			BJB SERIES系列貫流式蒸氣鍋爐			
			BJB-500	BJB-600	BJB-750	
相當蒸發量	EQUIV. EVAPORATION	Kg/hr.	500	600	750	
發熱量	CALORIFIC VALUE	Kcal/hr.	269,500	323,400	404,250	
最高壓力	MAX.PRESSURE	Kg/cm <sup>2</sup>	10			
傳熱面積	HEATING SURFACE	m <sup>2</sup>	8	8.5	9.7	
熱效率	EFFICIENCY	%	90~96%			
保有水量	QTY.OF WATER	L	130	136	145	
全載時燃料 消耗量 FULLY LOAD CONSUMPTION	柴油	DIESEL	L/hr.	36	43.2	54
	重油	HEAVY OIL	L/hr.	31.4	67.7	47.2
	LNG瓦斯	LNG	Nm <sup>3</sup> /hr.	32.9	39.5	49.4
	LPG瓦斯	LPG	Kg/hr.	24.4	29.3	36.6
燃燒方式	COMBUSTION TYPE		ON/OFF	ON/OFF or Hi-Low-Off		
儀控方式	BOILER CONTROL		選鈕控制或人機控制 FUNCTION SWITCH or HMI			
總電量(重油/柴油、瓦斯)	ELECTRICAL POWER(H/D,G)	KW	( 8 / 3 )	( 10 / 5 )	( 12 / 5 )	
製品重量	WEIGHT	Kg	980	1030	1100	
蒸氣出口	STEAM OUTLET		40	40	40	
煙囪口徑	CHIMNEY DIAMETER	mm	250	250	250	
搬入口尺寸	ROOM ENTRANCE		W1250×H2300	W1250×H2500		

\*另有(柴油/瓦斯) 雙燃料機種

\* Available in ( Diesel/Gas) dual fuel system

# BJB-1000~2000



(瓦斯)  
(Gas)

(瓦斯/柴油雙燃料)  
(Gas/Diesel Dual Fuel)

(柴油及重油)  
(Diesel and Heavy Oil)

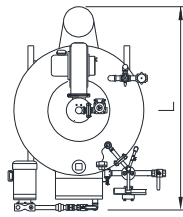
## SPECIFICATION 規格表BJB-1000~2000

型 式 MODEL			BJB SERIES系列貫流式蒸氣鍋爐			
			BJB-1000	BJB-1500	BJB-2000	
相當蒸發量	EQUIV. EVAPORATION	Kg/hr.	1000	1500	2000	
發熱量	CALORIFIC VALUE	Kcal/hr.	539,000	808,500	1,078,000	
最高壓力	MAX.PRESSURE	Kg/cm <sup>2</sup>	10			
傳熱面積	HEATING SURFACE	m <sup>2</sup>	9.9	9.9	9.9	
熱效率	EFFICIENCY	%	90~96%			
保有水量	QTY.OF WATER	L	195	195	195	
全載時燃料 消耗量 FULLY LOAD CONSUMPTION	柴油	DIESEL	L/hr.	72	108	144
	重油	HEAVY OIL	L/hr.	63	94.5	126
	LNG瓦斯	LNG	Nm <sup>3</sup> /hr.	65.8	98.7	131.6
	LPG瓦斯	LPG	Kg/hr.	48.8	73.2	97.6
燃燒方式	COMBUSTION TYPE		Hi-Low-Off			
儀控方式	BOILER CONTROL		選鈕控制或人機控制 FUNCTION SWITCH or HMI			
總電量 (重油/柴油、瓦斯)	ELECTRICAL POWER(H/D,G)	KW	( 12 / 6 )	( 20 / 9 )	( 22 / 11 )	
製品重量	WEIGHT	Kg	1400	1700	1900	
蒸氣出口	STEAM OUTLET		50	50	65	
煙囪口徑	CHIMNEY DIAMETER	mm	300	300	300	
搬入口尺寸	ROOM ENTRANCE		W1600×H2400	W1600×H2400	W2300×H2600	

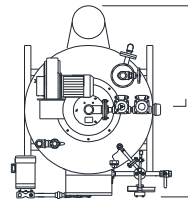
\*另有(柴油/瓦斯) 雙燃料機種

\*Available in ( Diesel/Gas) dual fuel system

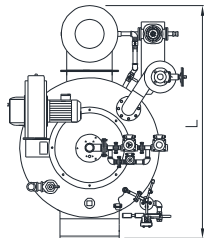
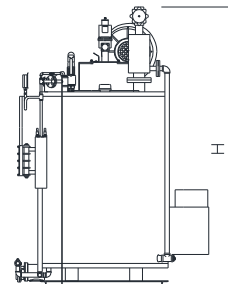
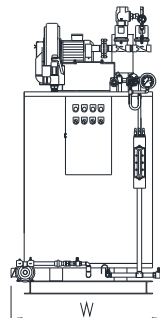
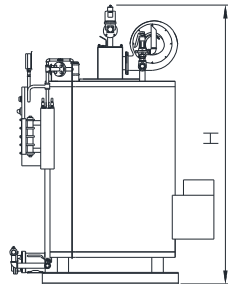
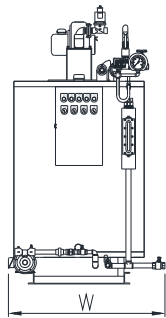
# Boiler Dimension (Gas) 鍋爐尺寸(燃瓦斯系統)



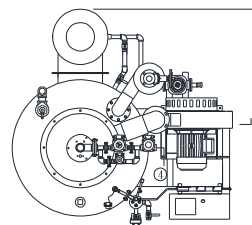
BJB-200~400



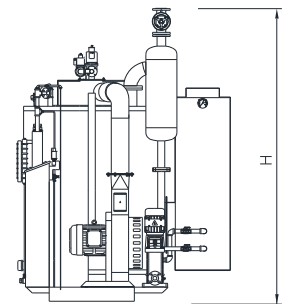
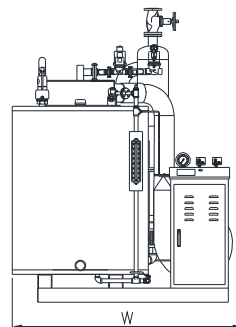
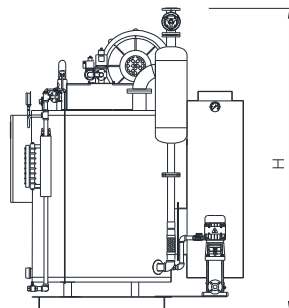
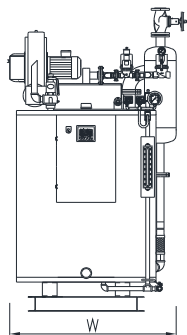
BJB-500~750



BJB-1000~1500



BJB-2000

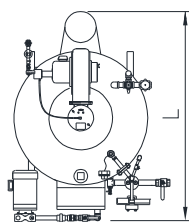


型號 Model	尺寸 Dimension	L	W	H
BJB-200		1200	830	1700
BJB-250		1200	830	1700
BJB-300		1380	980	1800
BJB-350		1380	980	1800
BJB-400		1380	980	1900
BJB-500		1800	1185	2100
BJB-600		1800	1185	2200
BJB-750		1800	1185	2320
BJB-1000~1500		2000	1430	2510
BJB-2000		2180	2030	2510

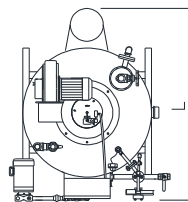
規格及尺寸因裝備改良等原因恕不另行通知

The content of this specification is subject to change without notice.

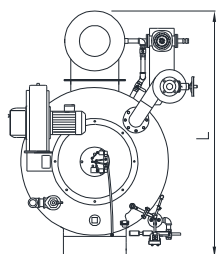
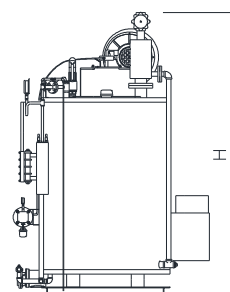
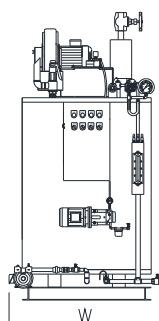
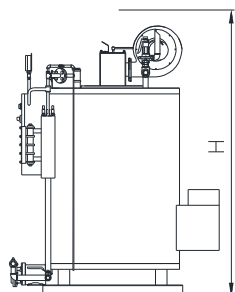
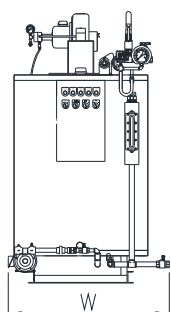
# Boiler Dimension (Oil) 鍋爐尺寸(燃油系統)



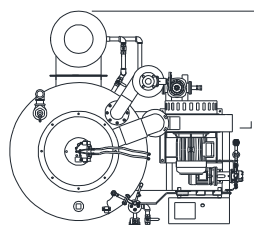
BJB-200~400



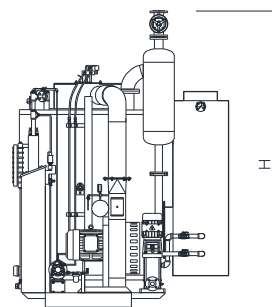
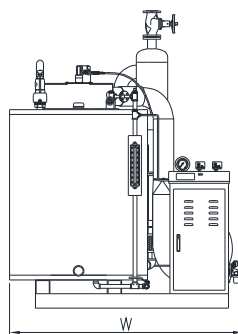
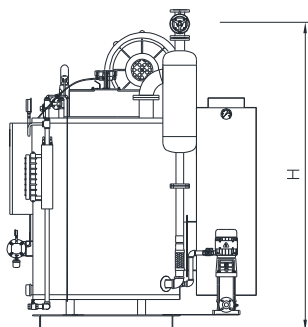
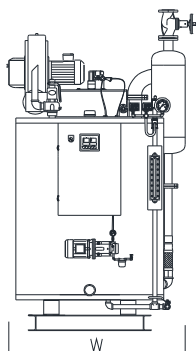
BJB-500~750



BJB-1000~1500



BJB-2000~2500(Heavy Oil)



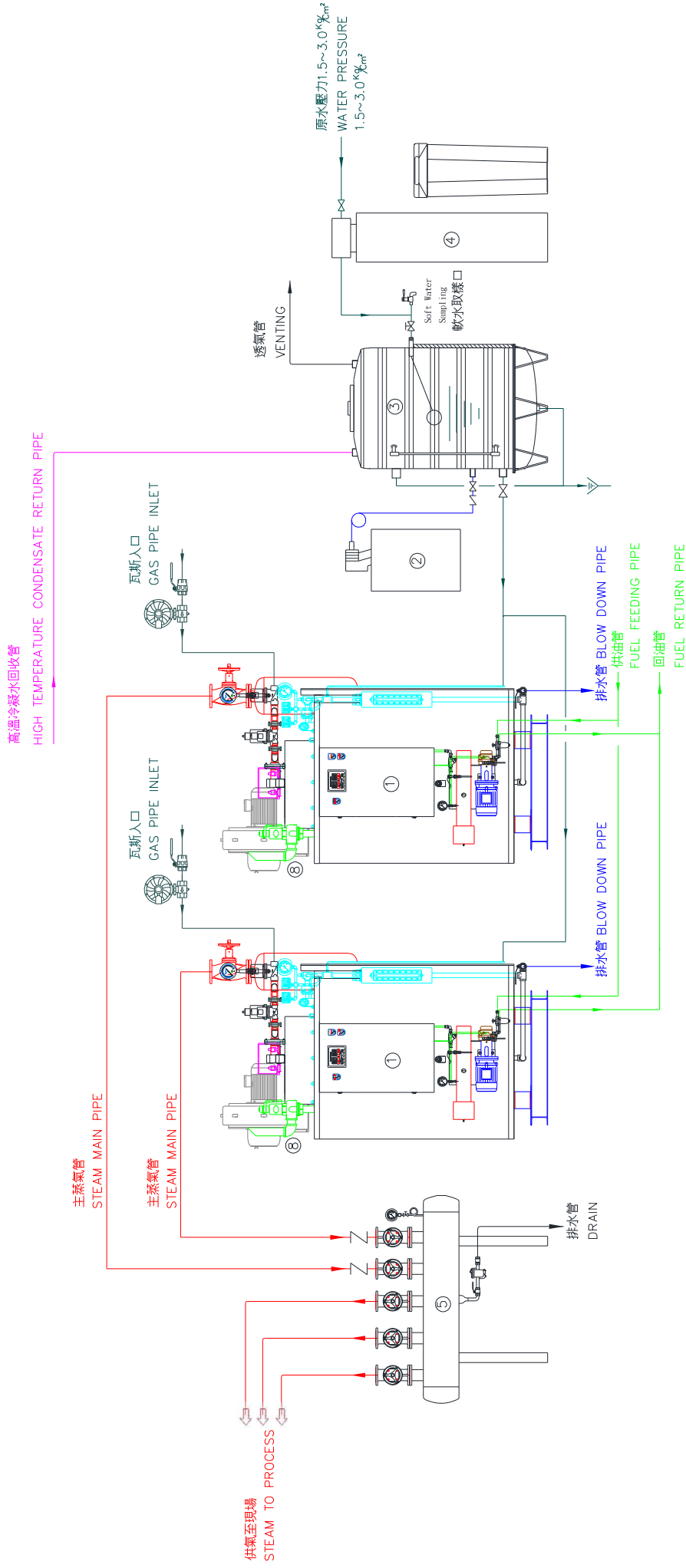
型號 Model	尺寸 Dimension	L	W	H
BJB-200		1200	830	1700
BJB-250		1200	830	1700
BJB-300		1380	980	1800
BJB-350		1380	980	1800
BJB-400		1380	980	1900
BJB-500		1800	1185	2100
BJB-600		1800	1185	2200
BJB-750		1800	1185	2320
BJB-1000~1500		2000	1430	2510
BJB-2000~2500(重油Heavy Oil)		2180	2150	2510

規格及尺寸因裝備改良等原因恕不另行通知

The content of this specification is subject to change without notice.



# 鍋爐管流程圖 BOILER SYSTEM PIPING FLOW CHART



- ① - 全自動貫流式蒸氣鍋爐 AUTOMATIC ONCE THROUGH STEAM BOILER
- ② - 定量注藥機 CHEMICAL DOSING PUMP
- ③ - 高溫冷凝水回收槽  
或給水槽 CONDENSATE RECEIVING TANK  
OR SOFT WATER TANK
- ④ - 全自動軟水機 AUTOMATIC WATER SOFTENER
- ⑤ - 儲氣分配槽 STEAM HEADER





# SERIES PRODUCT 產品系列





臥型煙管式鍋爐  
HORIZONTAL FIRE TUBE STEAM BOILER



貫流式蒸氣熱鍋爐 ONCE THROUGH STEAM BOILER



熱媒加熱爐 THERMAL OIL HEATER



熱水鍋爐 HOT WATER BOILER



## 主要產品

- 貫流式蒸氣鍋爐
- 熱媒加熱爐
- 臥型煙管式鍋爐
- 熱水鍋爐
- 熱交換器
- 壓力容器
- 各種化學不銹鋼油槽、桶槽
- 各種高壓管道配管工程
- 過濾及軟水處理設備
- 鍋爐清罐劑、脫氧劑

## MAIN PRODUCTS

- Once Through Steam Boiler
- Thermal Oil Heater
- Horizontal Fire Tube Boiler
- Hot Water Boiler
- Heat Exchanger
- Pressure Vessel
- All Kinds Of Chemical Stainless Steel Oil Tank, Drum Tank
- All Kinds Of High Pressure Piping Engineering
- Filtration & Soft Water Treatment Equipment
- Boiler Chemical, Oxygen Scavengers



本昭興業股份有限公司  
BEEN JAU ENTERPRISE CO., LTD.

NO.31, Gong 9th Road, Linkou District,  
New Taipei City 24452, Taiwan

TEL : +886-2-8601-1926

FAX : +886-2-8601-1931

E-mail : [beenjau@beenjau.com.tw](mailto:beenjau@beenjau.com.tw)

Website : [www.beenjau.com.tw](http://www.beenjau.com.tw)



代理商  
Agent