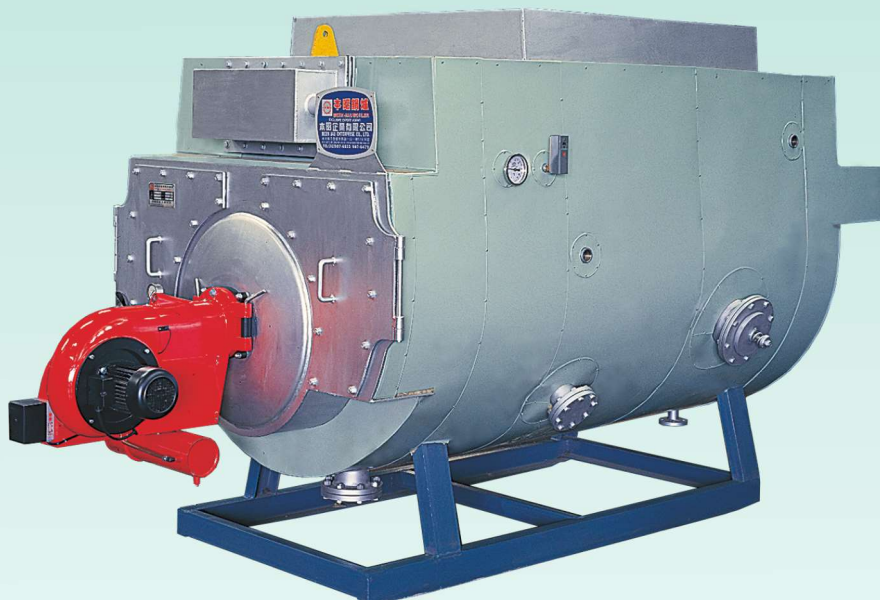


# 全自動高效率熱水鍋爐系列

AUTOMATIC HIGH EFFICIENCY HOT WATER BOILER SERIES



**BJW熱水鍋爐**  
HOT WATER BOILER



**BOT開放式熱水鍋爐**  
OPEN TYPE HOT WATER BOILER



**BVT豎型熱水鍋爐**  
VERTICAL TYPE HOT WATER BOILER

**本昭興業股份有限公司**  
**BEEN JAU ENTERPRISE CO., LTD.**

# BJW 熱水鍋爐

## The Specification of BJW Hot Water Boiler

型式Model		BJW SERIES系列貫流式熱水鍋爐		BJW SERIES系列貫流式熱水鍋爐		BJW SERIES系列貫流式熱水鍋爐	
		BJW-20	BJW-40	BJW-60	BJW-80	BJW-100	BJW-120
發熱量Capacity	Kcal/Hr	200,000	400,000	600,000	800,000	1,000,000	1,200,000
傳熱面積 Heating Surface	M <sup>2</sup>	6.6	8	9.9	9.9	9.9	14.8
最高使用壓力M.A.W.P	kg/cm <sup>2</sup>	10		10		10	
產熱水量 (15-60°C)	加侖/小時G.P.H.	1,100	2,200	3,300	4,400	5,500	6,600
Water Value	公升/小時L.P.H.	4,400	8,800	13,300	17,700	22,200	26,600
重油HEAVY OIL	L/Hr	-	47.3	71.0	94.6	118.3	141.9
柴油DIESEL OIL	L/Hr	27.0	54.1	81.1	108.1	135.1	162.2
天然瓦斯LNG	NM <sup>3</sup> /Hr	24.7	49.4	74.2	98.9	123.6	148.3
液化瓦斯LPG	Kg/Hr	18.3	36.7	55.0	73.3	91.7	110.0
燃燒控制 Control Method Of Combustion		全自動控制Fully Automatic Control		全自動控制Fully Automatic Control		全自動控制Fully Automatic Control	
		ON-OFF	ON-OFF & Hi-Low off	Hi-Low-OFF		Hi-Low-OFF & Proportional	
溫度控制 Control Method Of Temperature		全自動可調式溫度控制 Automatic Adjustable Temp. Control					
安全裝置 Safety Device		火焰檢出器、燃燒保護器、溫度控制器、爐水超溫保護及壓力安全閥 Flame Detector, Burning Protector, Temperature Controller, Water overheat protection and Pressure Safety Valve					
給水管 Water Inlet	φ mm	40/50	50/65	65/80	80	100	100
熱水管 Hot Water Outlet	φ mm	40/50	50/65	65/80	80	100	100
回水管 Hot Water Return	φ mm	40/50	50/65	65/80	80	100	100
排水管 Drain	φ mm	25	25	25	25	25	40
柴油入口 Diesel Inlet	φ mm	15	15	15	15	15	15
重油入口 Heavy Oil Inlet	φ mm	-	40	40	40	40	40
LNG入口 LNG Inlet	φ mm	25	40	50	50	50	50/65
LPG入口 LPG Inlet	φ mm	25	40	50	50	50	50
鍋爐全長 Boiler Length	L mm	1300	1470	1750	1750	1750	2300
鍋爐全寬 Boiler Width	W mm	900	1000	1500	1500	1500	2500
鍋爐全高 Boiler Hight	H mm	1850	2250	2500	2600	2600	2570
煙囪口徑 Chimney Dia.	φ mm	200	250	300	300	300	350
製品重量 Weight of Products	kg	650	1100	1400	1500	1800	2400
循環幫浦 Hot Water Cir. Pump		視加熱之溫度差所計算出之循環水量而定。 (溫水泳池、空調取暖、工業製程等) Heating Circulation: To be decided by the circulation rate that is calculated from the heating temperature difference. (Swimming pool heation, Air-conditioning heating, Industrial process heating, etc.)					
*本表所列規格及尺寸因裝備改良等原因恕不另行通知。							
**本規格以外之型式可另行設計製造；另有(柴油/瓦斯)雙燃料及沼氣機種。							

本表所列規格及尺寸因裝備改良等原因恕不另行通知

The contents of this catalog are subject to change without notice.

# BJW 熱水鍋爐

## The Specification of BJW Hot Water Boiler



### 特點：

1. 鍋爐熱效率高於一般熱水鍋爐。
2. 用途廣泛舉凡淋浴、溫水游泳池、SPA 池、採暖、製程加熱... 等。
3. 選購間接加熱配備，鍋爐無水質負擔，耐久性高達10年以上。
4. 在輸出熱能相等下，體積小於一般熱水鍋爐，不佔空間。
5. 可併聯數台使用，依需求負載分別起動，發揮以小制大之功能。

### Special Features:

1. Boiler efficiency higher than conventional hot water boiler.
2. Can be used in different applications, such as hot water shower, swimming pool heating, SPA, Air-conditional heating, process heating.
3. Optional indirect heating equipment available, no feed water quality problem, boiler life more than 10 years.
4. Several boilers can be installed and operated in parallel, therefore the system runs on the actual load demand.
5. Can be installed in one parallel system, the system operated on actual demand to start boiler(s) in sequence, so the load can always be met by proper boiler or boilers.



生活熱水 Household hot water



休閒 Leisure



空調採暖  
Air-conditioning heating



製程加熱系統  
Process heating



# 熱交換器

## HEAT EXCHANGER

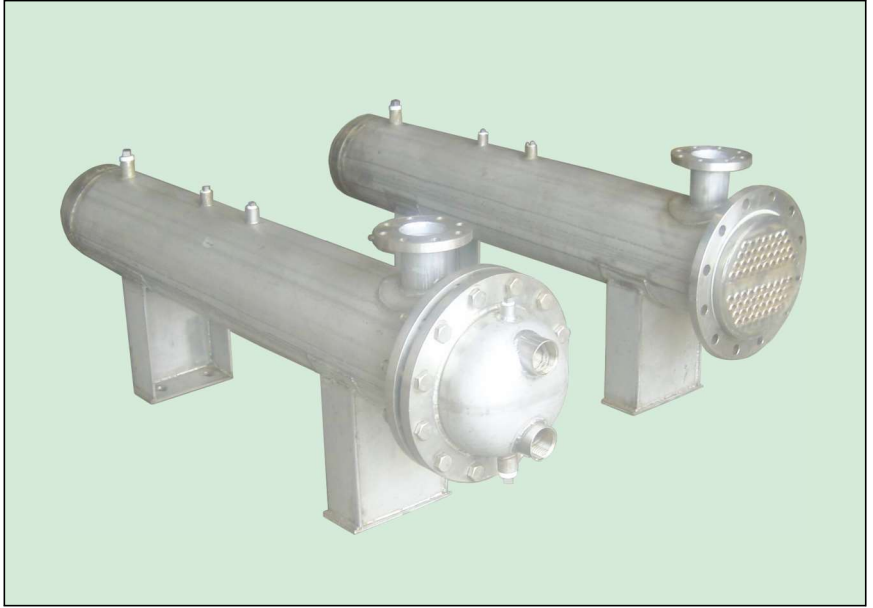
### 板式熱交換器

#### PLATE HEAT EXCHANGER

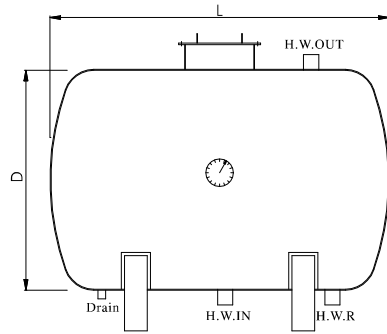
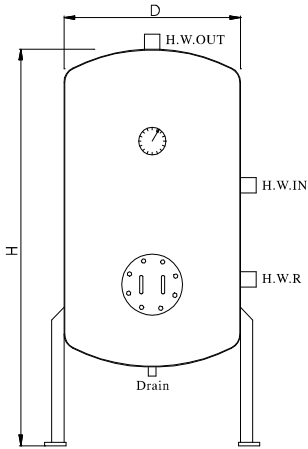


### 殼管式熱交換器

#### SHELL AND TUBE HEAT EXCHANGER



## 熱水箱 (HOT WATER TANK)



### 功能：

- \* 貯存熱水配合熱水鍋爐使用，可應付尖峰負載，增大鍋爐熱水系統供應量。
- \* 具緩衝功能，穩定系統水溫。

### Special Features:

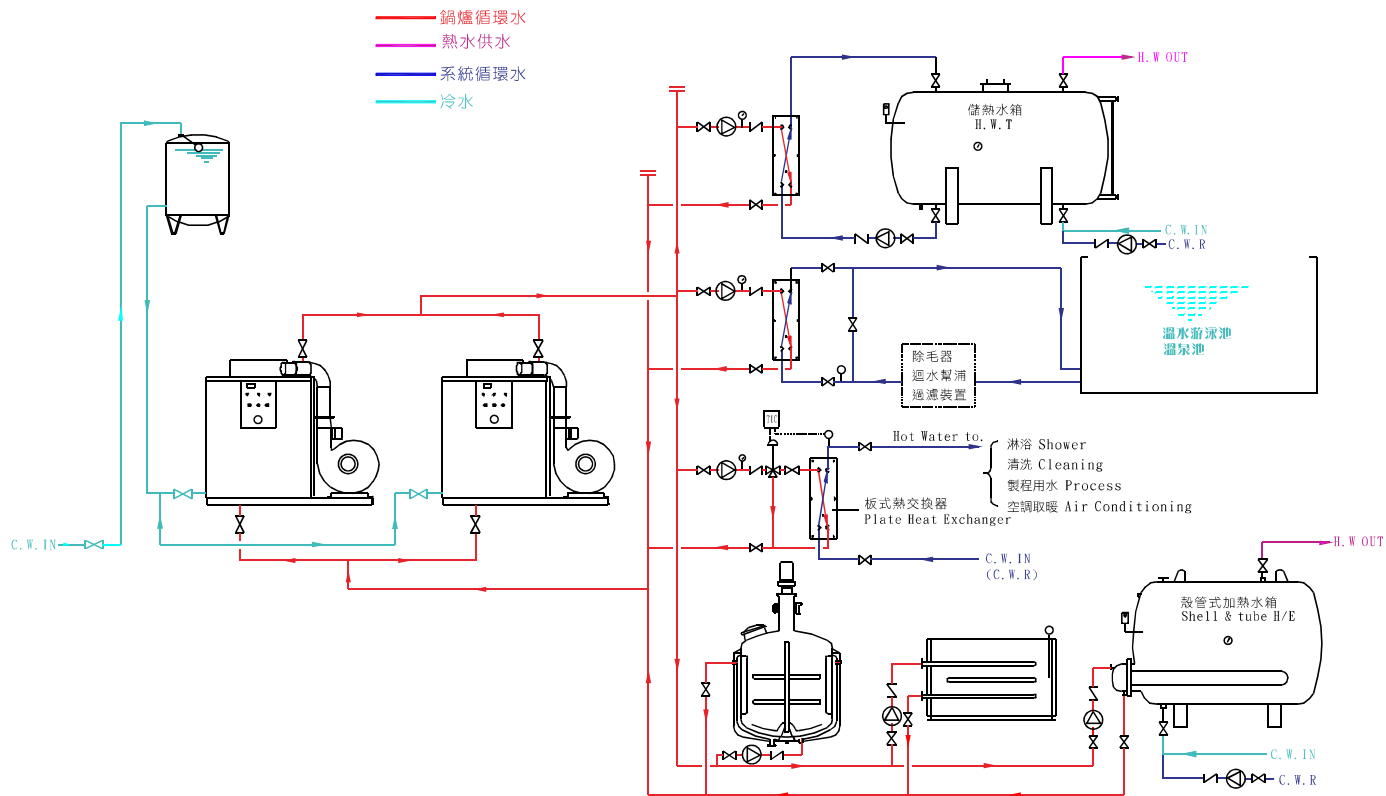
- \* For hot water storage use when installed with hot water boiler system, increasing the hot water supply capacity to meet peak load demand.
- \* As a buffer area to stabilized the hot hot water temperature in the system.

熱水箱	容水量 GAL	尺寸 DIMENSIONS mm			厚度 THICKNESS mm	滿水重量 FULL WATER WEIGHT kg
		直徑 (D) DIAMETER	總長度 (臥) LENGTH	總高度 (豎) HEIGHT		
WT-300	300	970	1850	2100	4.5	1442
WT-500	500	1170	2170	2420	4.5	2435
WT-800	800	1460	2230	2480	4.5	3757
WT-1000	1000	1550	2550	2800	6.0	4664
WT-1200	1200	1550	2900	3150	6.0	5508
WT-1500	1500	1750	2900	3150	6.0	6779
WT-2000	2000	1940	3160	3410	6.0	9065
WT-2500	2500	1940	3600	3900	8.0	10450

- \* 本規格以外之尺寸，可另行設計製造。
- \* 開孔口徑，配合容水量及現場配管而定。
- \* 水箱內外防銹處理，亦可定製不銹鋼。
- \* Tank can be tailor made to meet specifications other than above listed
- \* Hole sizes to be decided by actual flow rate and piping requirement
- \* Both inside and outside of the tank are anti-corrosion treated. Stainless Steel tank also available.

# 中央系統熱水供應流程圖

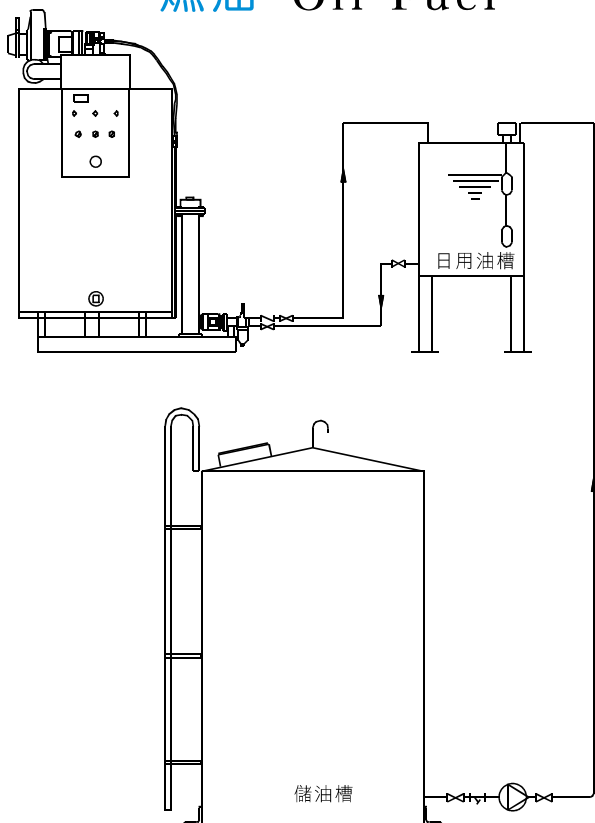
## CENTRALIZED HOT WATER SYSTEM



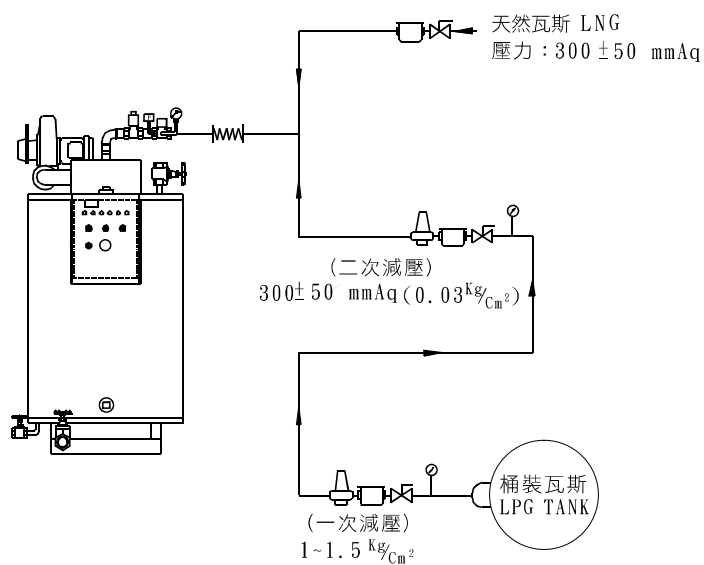
# 燃料供應系統流程圖

## FUEL SYSTEM

### 燃油 Oil Fuel



### 燃瓦斯 Gas Fuel



### 符號說明:

- 手動閥
- 瓦斯過濾器
- 瓦斯減壓閥
- 橡膠軟管

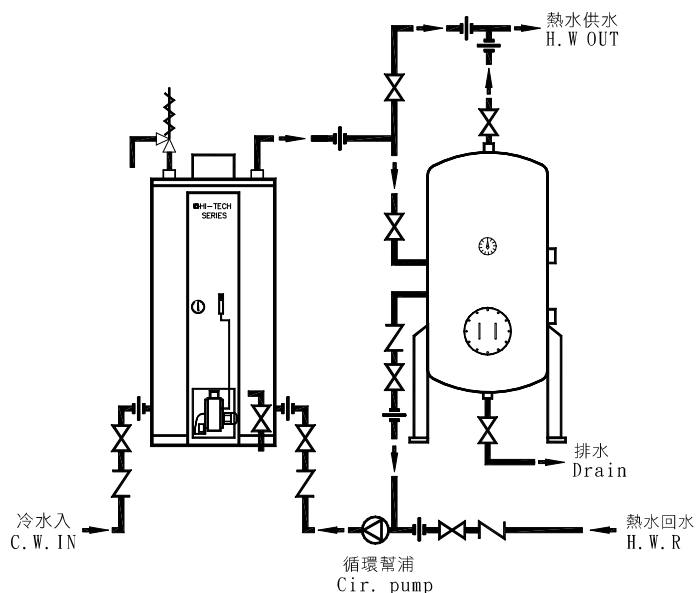
# BVT 豎型熱水鍋爐

## VERTICAL TYPE WATER BOILER



供水系統圖

WATER SUPPLY SYSTEM

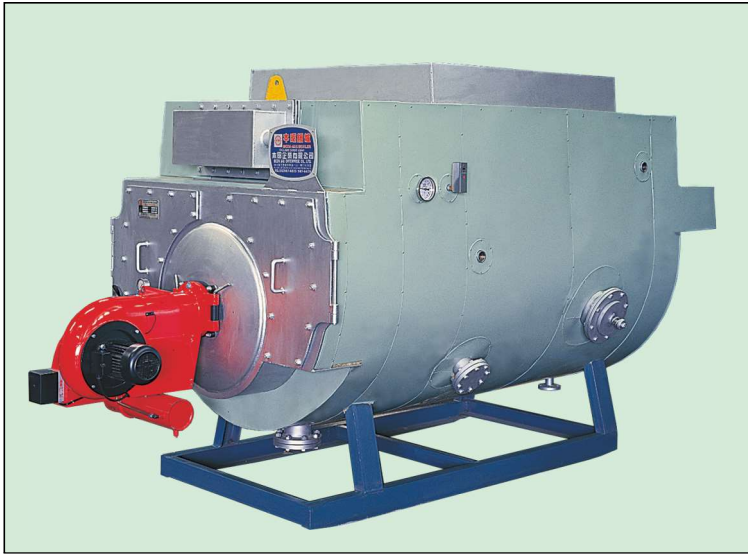


### 規格與尺寸 (SPECIFICATION AND DIMENSION)

型式 MODEL	BVT-37	BVT-48	BVT-58	BVT-69	BVT-79	BVT-95	BVT-117	BVT-135	BVT-159
發熱量 CAPACITY Kcal/Hr	63000	81600	99700	117700	135800	162800	199600	231000	272000
產熱水量 (15-60°C) G. P. H	370	480	585	690	797	955	1171	1356	1596
WATER VALUE (15-80°C) G. P. H	256	331	405	478	552	661	811	939	1105
全載時燃料消耗	重油 HEAVY OIL L/Hr						21	24	28
	柴油 DIESEL OIL L/Hr	7.5	10	12	14	16	19	24	32
	天然瓦斯 LNG NM <sup>3</sup>	7.4	10	12	14	16	19	23	32
	液化瓦斯 LPG kg/Hr	5.3	7	8	10	11	14	17	23
爐內容水量 WATER OF ORDINARY GAL	64	78	93	105	118	137	160	182	210
鍋爐直徑 BOILER DIA. mm	680	750	780	810	870	970	1030	1080	1150
鍋爐高度 BOILER HEIGHT mm	1460	1550	1580	1670	1710	1775	1780	1860	1860
煙囪口徑 CHIMNEY DIA. mm	190	190	190	220	220	220	260	260	260

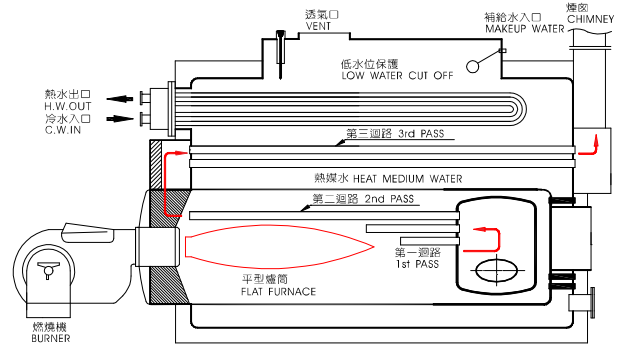
# BOT 開放式熱水鍋爐

## OPEN TYPE HOT WATER BOILER



開放式熱水鍋爐剖面圖

SECTION OF OPEN TYPE HOT WATER BOILER



### 規格與尺寸 (SPECIFICATION AND DIMENSION)

型式 MODEL		BOT-30	BOT-40	BOT-50	BOT-60	BOT-80	BOT-100	BOT-120	BOT-150	BOT-180	
發熱量 CAPACITY × 10 <sup>3</sup>	Kcal/Hr	300	400	500	600	800	1000	1200	1500	1800	
產熱水量 WATER VALUE (15-60°C)	G. P. H	1568	2114	2642	3170	4227	5284	6340	7926	9511	
效率 EFFICIENCY	%	87%以上									
全載時燃料消耗	重油 HEAVY OIL	L/Hr	34	45	57	68	91	114	135	168	200
	柴油 DIESEL OIL	L/Hr	40	54	67	81	108	135	162	202	243
	天然瓦斯 LNG	NM <sup>3</sup>	39	51	63	76	102	129	155	193	232
	液化瓦斯 LPG	kg/Hr	27	35	43	52	70	87	104	130	156
鍋爐全長 LENGTH	mm	2800	3000	3350	3500	3800	4000	4300	4500	4750	
鍋爐總寬 WIDTH	mm	1450	1550	1700	1800	1900	2000	2050	2100	2200	
鍋爐總高 HEIGHT	mm	1950	2000	2000	2050	2050	2100	2200	2300	2350	
爐身長度 BODY LENGTH	mm	2200	2300	2650	2800	3000	3200	3400	3600	3850	
煙囪口徑 CHIMNEY DIA.	mm	260	260	325	325	360	400	400	450	485	
本體重量 EMPTY	kgs	2000	2200	2600	2850	3200	3650	3900	4200	4550	
滿水重量 FULL WATER WEIGHT	kgs	4450	4600	6300	6500	7600	7950	8300	8650	9000	



## A. 主要產品

1. 熱水. 蒸氣. 熱媒鍋爐
2. 熱交換器. 熱水儲槽
3. 水質處理過濾設備

## A. Main Products

1. HOT WATER BOILER, STEAM BOILER, THERMAL OIL BOILER
2. HEAT EXCHANGER, HOT WATER STORAGE TANK
3. WATER TREATMENT/FILTRATION EQUIPMENT

## B. 系統規劃. 設計. 施工

- \* 熱水. 蒸氣系統工程
- \* 飯店. 學校. 醫院. 宿舍
- \* 游泳池. SPA池. 溫泉
- \* 空調採暖製程加熱系統
- \* 配管. 保溫. 溫控工程

## B. System planning, design, engineering, and construction

- \* Hot water, steam system engineering/construction
- \* Hotel, school, hospital, and dormitory
- \* Swimming pool, SPA, hot spring
- \* Air-conditioning heating, process heating
- \* Piping, insulation, temperature control engineering

# 本昭興業股份有限公司 BEEN JAU ENTERPRISE CO., LTD.

台北：新北市林口區工九路31號

NO.31 GONG 9TH RD., LINKOU DIST., NEW TAIPEI CITY, TAIWAN 244, R.O.C

TEL : 886-2-8601-1926 ; FAX : 886-2-8601-1931

E-mail : beenjau@beenjau.com.tw

網址 : [Http://beenjau.com.tw](http://beenjau.com.tw)

台中晁瑞公司 : TEL:(04)2698-0399 FAX:(04)2699-3168

高雄台川公司 : TEL:(07)392-4212 FAX:(07)392-5705

代理商：

Agent：